



**Working Standard**  
**Pertussis Toxoid Monoclonal Antibody PS21C2.2.1**  
**NIBSC code: PS21C2.2.1**  
**Instructions for use**  
**(Version 2.0, Dated 23/08/2022)**

This material is not for in vitro diagnostic use

**1. INTENDED USE**

Monoclonal antibody clone PS21C2.2.1 is intended to be used in immunoassays that measure the content and quality of pertussis toxoid antigen in vaccines for human use.

Batch 1 (Batch ID 220221-PS21)

**2. CAUTION**

**The material is not of human or bovine origin. This preparation is not for administration to humans or animals**

As with all materials of biological origin, this preparation should be regarded as potentially hazardous to health. It should be used and discarded according to your own laboratory's safety procedures. Such safety procedures should include the wearing of protective gloves and avoiding the generation of aerosols. Care should be exercised in opening ampoules or vials, to avoid cuts.

**3. UNITAGE**

N/A

**4. CONTENTS**

Country of origin of biological material: France.  
Each vial contains 0.5 ml of liquid anti-pertussis toxoid monoclonal antibody clone PS21C2.2.1 at a total protein concentration of 1 mg/mL. PS21C2.2.1 is a mouse IgG1 antibody produced from hybridoma and Protein A purified. The antibody is in Phosphate Buffer pH 7.4 (155 mM NaCl, 50 mM Na<sub>2</sub>HPO<sub>4</sub> and 1.8 mM KH<sub>2</sub>PO<sub>4</sub>). The antibody was filtered (0.2 µM) and does not contain preservative.

**5. STORAGE**

The material should be stored in the dark at -80°C  
Material type: Liquid – will be shipped according to the storage and shipping conditions of the product

**6. DIRECTIONS FOR OPENING**

Vials have a screw cap; an internal stopper may also be present. The cap should be removed by turning anti-clockwise. Care should be taken to prevent loss of the contents. Please note: If a stopper is present on removal of the cap, the stopper should remain in the vial or be removed with the cap.

**7. USE OF MATERIAL**

PS21C2.2.1 is directed against the S1 subunit of pertussis toxoid and can be paired with monoclonal antibody 629E1 in immunoassays requiring both a capture and detection antibody.

**8. STABILITY**

Reference materials are held at NIBSC within assured, temperature-controlled storage facilities. Reference Materials should be stored on receipt as indicated on the label.

**9. REFERENCES**

None

**10. ACKNOWLEDGEMENTS**

N/A

**11. FURTHER INFORMATION**

Further information can be obtained as follows;  
This material: [enquiries@nibsc.org](mailto:enquiries@nibsc.org)  
WHO Biological Standards:  
<http://www.who.int/biologicals/en/>  
JCTLM Higher order reference materials:  
<http://www.bipm.org/en/committees/jc/jctlm/>  
Derivation of International Units:  
[http://www.nibsc.org/standardisation/international\\_standards.aspx](http://www.nibsc.org/standardisation/international_standards.aspx)  
Ordering standards from NIBSC:  
<http://www.nibsc.org/products/ordering.aspx>  
NIBSC Terms & Conditions:  
[http://www.nibsc.org/terms\\_and\\_conditions.aspx](http://www.nibsc.org/terms_and_conditions.aspx)

**12. CUSTOMER FEEDBACK**

Customers are encouraged to provide feedback on the suitability or use of the material provided or other aspects of our service. Please send any comments to [enquiries@nibsc.org](mailto:enquiries@nibsc.org)

**13. CITATION**

In all publications, including data sheets, in which this material is referenced, it is important that the preparation's title, its status, the NIBSC code number, and the name and address of NIBSC are cited and cited correctly.



#### 14. MATERIAL SAFETY SHEET

Classification in accordance with Directive 2000/54/EC, Regulation (EC) No 1272/2008: Not applicable or not classified

Physical and Chemical properties	
Physical appearance: Liquid	Corrosive: No
Stable: Yes	Oxidising: No
Hygroscopic: No	Irritant: No
Flammable: No	Handling: See caution, Section 2
Other (specify):	None
Toxicological properties	
Effects of inhalation:	Not established, avoid inhalation
Effects of ingestion:	Not established, avoid ingestion
Effects of skin absorption:	Not established, avoid contact with skin
Suggested First Aid	
Inhalation:	Seek medical advice
Ingestion:	Seek medical advice
Contact with eyes:	Wash with copious amounts of water. Seek medical advice
Contact with skin:	Wash thoroughly with water.
Action on Spillage and Method of Disposal	
Spillage of ampoule contents should be taken up with absorbent material wetted with an appropriate disinfectant. Rinse area with an appropriate disinfectant followed by water. Absorbent materials used to treat spillage should be treated as biological waste.	

#### 15. LIABILITY AND LOSS

In the event that this document is translated into another language, the English language version shall prevail in the event of any inconsistencies between the documents.

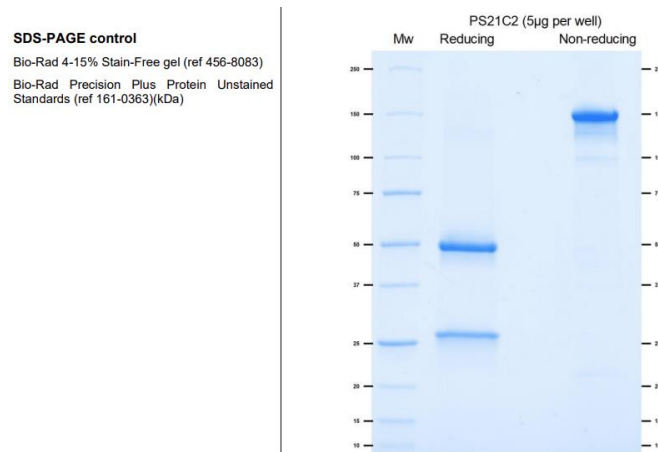
Unless expressly stated otherwise by NIBSC, NIBSC's Standard Terms and Conditions for the Supply of Materials (available at [http://www.nibsc.org/About\\_Us/Terms\\_and\\_Conditions.aspx](http://www.nibsc.org/About_Us/Terms_and_Conditions.aspx) or upon request by the Recipient) ("Conditions") apply to the exclusion of all other terms and are hereby incorporated into this document by reference. The Recipient's attention is drawn in particular to the provisions of clause 11 of the Conditions.

#### 16. INFORMATION FOR CUSTOMS USE ONLY

<b>Country of origin for customs purposes*:</b> France * Defined as the country where the goods have been produced and/or sufficiently processed to be classed as originating from the country of supply, for example a change of state such as freeze-drying.
<b>Net weight:</b> 0.5 g
<b>Toxicity Statement:</b> Non-toxic
<b>Veterinary certificate or other statement</b> if applicable.
<b>Attached:</b> No

#### 17. ADDITIONAL PRODUCT INFORMATION FOR THIS BATCH

##### SDS-PAGE profile for PS21C2.2.1:



##### SE-HPLC chromatogram for PS21C2.2.1:

