



### Working Standard

#### Anti-pneumococcal serotype 6B monoclonal antibody (clone 14-102CC2 ID9)

NIBSC code: 22/290  
Instructions for use  
(Version 2.0, Dated 15/03/2023)

This material is not for in vitro diagnostic use

#### 1. INTENDED USE

Monoclonal antibody 22/290 (Clone 14-102CC2 ID9) is intended for use as a serotyping reagent. It is suitable for use in a variety of immunoassays for the detection and quantification of pneumococcal capsular polysaccharide 6B (Pn6B).

#### 2. CAUTION

**The material is not of human or bovine origin. This preparation is not for administration to humans or animals**

As with all materials of biological origin, this preparation should be regarded as potentially hazardous to health. It should be used and discarded according to your own laboratory's safety procedures. Such safety procedures should include the wearing of protective gloves and avoiding the generation of aerosols. Care should be exercised in opening ampoules or vials, to avoid cuts.

#### 3. UNITAGE

N/A

#### 4. CONTENTS

Country of origin of biological material: United States.  
Each vial contains 0.5 mL of liquid anti-pneumococcal serotype 6B monoclonal antibody at a total protein concentration of 1 mg/mL. 22/290 is a murine IgG1 kappa antibody produced from hybridoma. The hybridoma was produced using a purified Pn6B specific polysaccharide conjugate for the immunisation of mice. The antibody is in Phosphate Buffer pH 7.3.

Batch 1 (Bulk batch ID KP17094)

#### 5. STORAGE

The material should be stored between -20°C and -80°C  
Material type: Liquid – will be shipped according to the storage and shipping conditions of the product

#### 6. DIRECTIONS FOR OPENING

Vials have a screw cap; an internal stopper may also be present. The cap should be removed by turning anti-clockwise. Care should be taken to prevent loss of the contents. Please note: If a stopper is present on removal of the cap, the stopper should remain in the vial or be removed with the cap.

#### 7. USE OF MATERIAL

22/290 has been used in a sandwich ELISA for detection of Pn6B. The most suitable dilution for use of this antibody should be determined by the end user for their specific application.

#### 8. STABILITY

Reference materials are held at NIBSC within assured, temperature-controlled storage facilities. Reference Materials should be stored on receipt as indicated on the label.

#### 9. REFERENCES

This section will be updated when references are made available.

#### 10. ACKNOWLEDGEMENTS

We are grateful to PATH, USA for collaborating with NIBSC and for funding this work to make available a panel of pneumococcal monoclonal antibodies. PATH is a global, non-profit organisation working towards improving public health.

#### 11. FURTHER INFORMATION

Further information can be obtained as follows;

This material: [enquiries@nibsc.org](mailto:enquiries@nibsc.org)

WHO Biological Standards:

<http://www.who.int/biologicals/en/>

JCTLM Higher order reference materials:

<http://www.bipm.org/en/committees/jc/jctlm/>

Derivation of International Units:

[http://www.nibsc.org/standardisation/international\\_standards.aspx](http://www.nibsc.org/standardisation/international_standards.aspx)

Ordering standards from NIBSC:

<http://www.nibsc.org/products/ordering.aspx>

NIBSC Terms & Conditions:

[http://www.nibsc.org/terms\\_and\\_conditions.aspx](http://www.nibsc.org/terms_and_conditions.aspx)

#### 12. CUSTOMER FEEDBACK

Customers are encouraged to provide feedback on the suitability or use of the material provided or other aspects of our service. Please send any comments to [enquiries@nibsc.org](mailto:enquiries@nibsc.org)

#### 13. CITATION

In all publications, including data sheets, in which this material is referenced, it is important that the preparation's title, its status, the NIBSC code number, and the name and address of NIBSC are cited and cited correctly.



**14. MATERIAL SAFETY SHEET**

Classification in accordance with Directive 2000/54/EC, Regulation (EC) No 1272/2008: Not applicable or not classified

Physical and Chemical properties	
Physical appearance: Liquid	Corrosive: No
Stable: Yes	Oxidising: No
Hygroscopic: No	Irritant: No
Flammable: No	Handling: See caution, Section 2
Other (specify): None	
Toxicological properties	
Effects of inhalation:	Not established, avoid inhalation
Effects of ingestion:	Not established, avoid ingestion
Effects of skin absorption:	Not established, avoid contact with skin
Suggested First Aid	
Inhalation:	Seek medical advice
Ingestion:	Seek medical advice
Contact with eyes:	Wash with copious amounts of water. Seek medical advice
Contact with skin:	Wash thoroughly with water.
Action on Spillage and Method of Disposal	
Spillage of ampoule contents should be taken up with absorbent material wetted with an appropriate disinfectant. Rinse area with an appropriate disinfectant followed by water. Absorbent materials used to treat spillage should be treated as biological waste.	

**15. LIABILITY AND LOSS**

In the event that this document is translated into another language, the English language version shall prevail in the event of any inconsistencies between the documents.

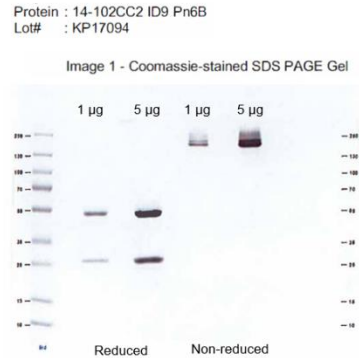
Unless expressly stated otherwise by NIBSC, NIBSC's Standard Terms and Conditions for the Supply of Materials (available at [http://www.nibsc.org/About\\_Us/Terms\\_and\\_Conditions.aspx](http://www.nibsc.org/About_Us/Terms_and_Conditions.aspx) or upon request by the Recipient) ("Conditions") apply to the exclusion of all other terms and are hereby incorporated into this document by reference. The Recipient's attention is drawn in particular to the provisions of clause 11 of the Conditions.

**16. INFORMATION FOR CUSTOMS USE ONLY**

<b>Country of origin for customs purposes*:</b> United States * Defined as the country where the goods have been produced and/or sufficiently processed to be classed as originating from the country of supply, for example a change of state such as freeze-drying.
<b>Net weight:</b> 0.5 g
<b>Toxicity Statement:</b> Non-toxic
<b>Veterinary certificate or other statement</b> if applicable.
<b>Attached:</b> No

**Additional product information for this batch**

**Purity by SDS PAGE: >95%**



**Aggregation by size exclusion chromatography: 0%**

Protein : 14-102CC2 ID9 Pn6B  
Lot# : KP17094

Image 2 - SEC

**Agilent GPC/SEC Software  
QC Analysis Report**

